

### Konapara Village at a Glance: Mymensingh, Bangladesh

Salient features of the VDSA Project sample village



#### Village Dynamics in South Asia (VDSA) Project

VDSA Project has been collecting panel data on farm households in South Asia. Based on these panel data, it provides profound insights into the social and economic changes in the village and household economies in the South Asia. The project collecting long-term socioeconomic data to better link and strengthens research, policy, and capacity building activities.

VDSA is funded by the Bill and Melinda Gates Foundation and implemented jointly by International Crops Research Institute for the Semi-Arid Tropics (ICRISAT), Indian Council for Agriculture Research (ICAR), and International Rice Research Institute (IRRI).

*Humnath Bhandari, Taznoore Samina Khanam, Samarendu Mohanty, Alamgir Chowdhury, Julhas Mia*

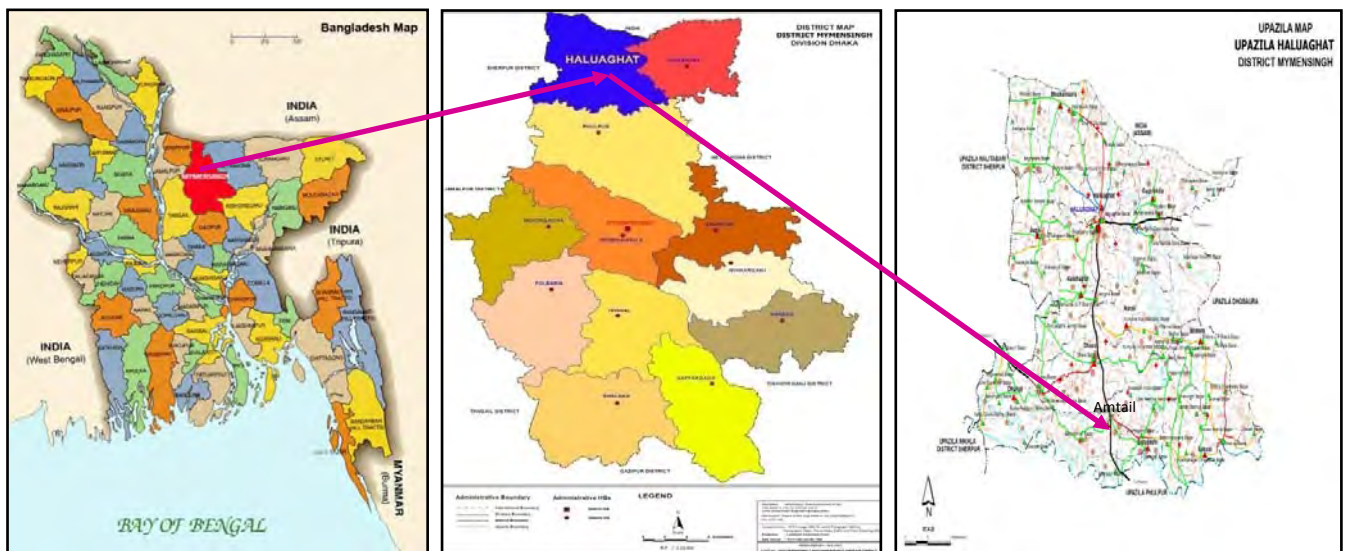
Social Sciences Division  
International Rice Research  
Institute (IRRI)  
Los Banos, Laguna 4031  
Philippines

2013

## Basic information about the village

### A) LOCATION AND BASIC CHARACTERISTICS

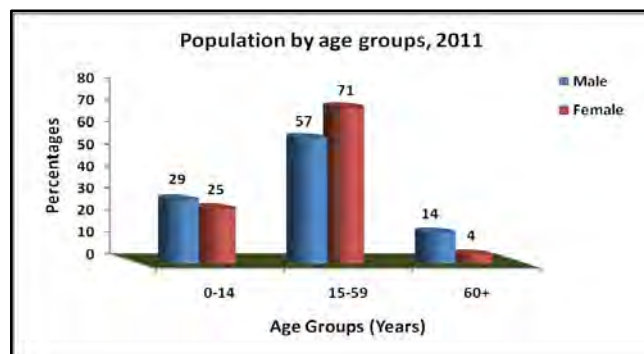
Name of the village	:	Konapara
Name of the union	:	Amtail
Name of the Upazila	:	Haluaghat
Name of the district	:	Mymensingh
Agro-ecological zone (AEZ)	:	Old Brahmaputra Floodplain (AEZ 9)
Agro-ecology	:	Unfavorable-drought
Development infrastructures	:	Unfavorable
Distance from Upazila HQ	km	14
Distance from district HQ	km	50
Latitude (N)	:	25° 12'
Longitude (E)	:	90° 36'
Total land area (whole village)	ha	90.28
Total land area (sample households)	ha	29.26
Total households (whole village)	no.	255
Total households (sample households)	no.	42
Total population (whole village)	no.	1100 (Male: 594; Female: 506)
Total population (sample households)	no.	197 (Male: 101; Female: 96)
Households involved in crop production	%	77
Distance from nearest district town	km	36
Distance from nearest national highways	km	1
Head of the village	:	Union Parishad Member



## B) DEMOGRAPHY OF THE SAMPLE HOUSEHOLDS (as of 2011)

### Classification of Population

Population density (Sq. km)	: 1218
Population growth rate (%/yr)	: -4.37
Child-women ratio (Per 1000)	: 88
Male-Female sex ratio	: 105
Income earner (Person/hh)	: 1.69
Dependency ratio (%)	: 56



### Classification of Households

Male headed households (no.)	: 39
Female headed households (no.)	: 3
Total households (no.)	: 42

Household and population, by types of religion

Types of religion	Household (no.)	Population (no.)
Islam	42	197
Hindu	0	0

Distribution of households and their family size, by farm size category

Farm household category*	Number of household	Percentage share in all farms	Family size (Person/Household)
Landless	15	35.71	4.33
Small	18	42.86	4.50
Medium	8	19.05	5.25
Large	1	2.38	16.00
<b>All farms</b>	<b>42</b>	<b>100</b>	<b>4.86</b>

\*Landless ( $\leq 0.2$  ha), Small (0.21-1.00 ha), Medium (1.01-2.00 ha) & Large ( $> 2.00$  ha)

### Educational Level

Number of literate persons and literacy rate of the population

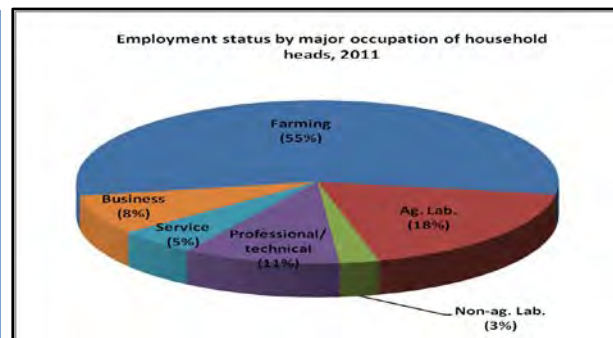
Levels of education*	Male (no.)	Female (no.)	Both sex (no.)
Illiterate	16	25	41
Can sign only	12	14	26
Primary	27	24	51
Secondary	34	26	60
Higher secondary	1	2	3
Graduate & above	4	1	5
<b>Total literate persons</b>	<b>78</b>	<b>67</b>	<b>145</b>
<b>Literacy rate (%)</b>	<b>68.04</b>	<b>56.38</b>	<b>62.30</b>

\* Literacy rate was calculated for people aged 5 years and above.

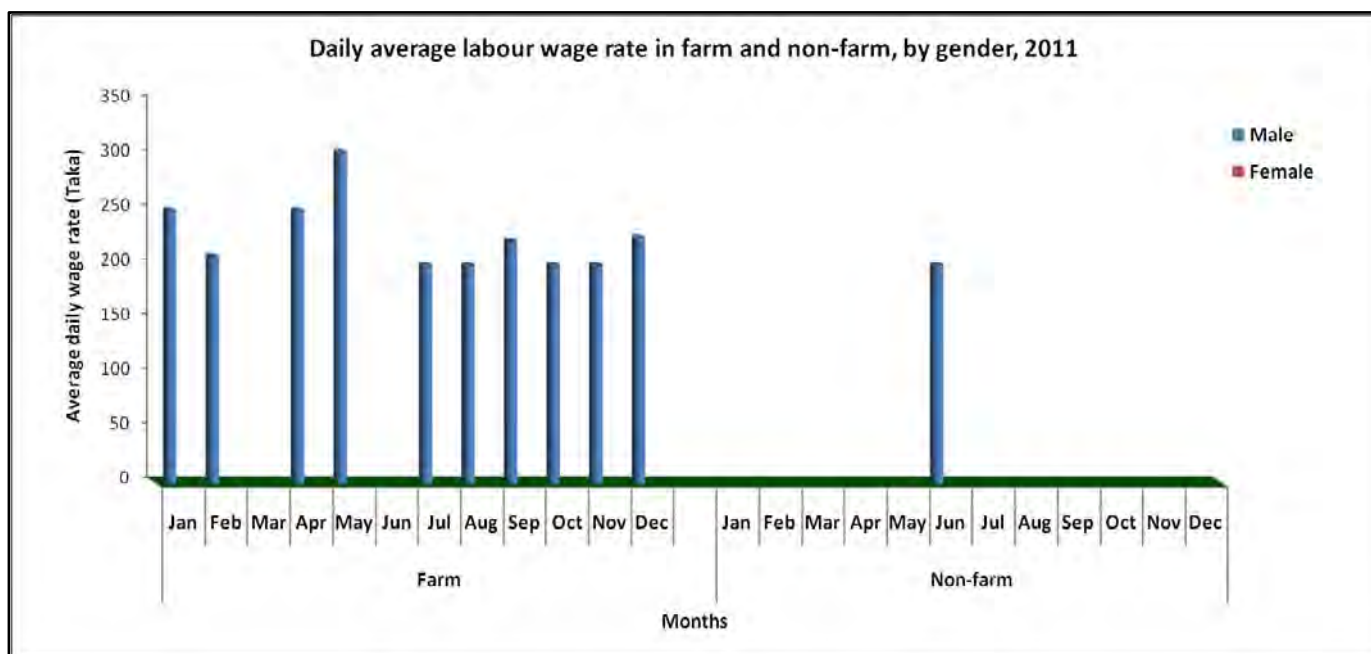
## Occupation

Employment status, by major occupation

Types of occupation	Population (no.)
Farming	31
Agricultural labor	8
Non-agricultural labor	1
Professional or technical worker	5
Service worker	21
Business	5
<b>Total economically active persons</b>	<b>71</b>
<b>Total economically inactive persons</b>	<b>126</b>



## Wage rates of farm and non-farm labor, by gender

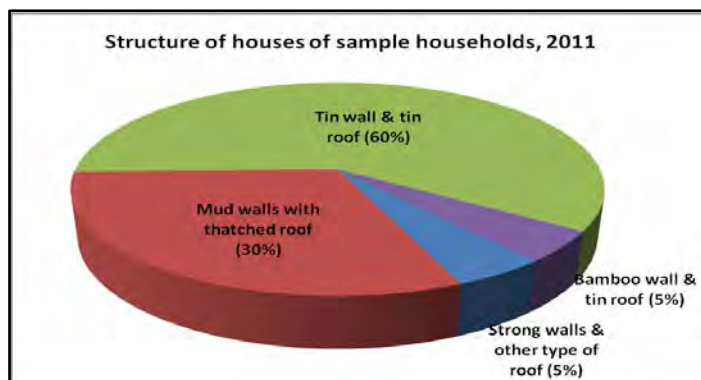


## Migrated population in the sample households

Migration	Both sex (no.)	Male (no.)	Female (no.)
Within the district	3	1	2
Another district	22	11	11
Foreign country	1	1	0
<b>Total out-migration</b>	<b>26</b>	<b>13</b>	<b>13</b>
<b>Total in-migration</b>	<b>25</b>	<b>13</b>	<b>12</b>

### C) OWNERSHIP OF ASSETS OF THE SAMPLE HOUSEHOLDS (as of 2011)

#### Structure of houses of the sample households



#### Possession of livestock and poultry

Types of livestock	Total numbers	Average (no./hh)
Bullocks	12	0.29
Buffaloes	1	0.02
Cows	34	0.81
Young cattle/calf	43	1.02
Goats	22	0.52
Poultry	473	11.31

#### Possession of agricultural/farm assets of the sample households

Farm machinery	Total numbers	Average (no./hh)
Local plough (iron/wooden)	27	0.64
Sprayers	4	0.10
Power tiller/tractor	2	0.05
Shallow tube well (STW)	17	0.40
Husking machine	1	0.02
Thresher	8	0.19
Agro processing unit	58	1.38
Implements used for caste occupation	20	0.48
Other minor implements	238	5.67

#### Possession of consumer assets of the sample households

Types	Total numbers	Average (no./hh)
Television	13	0.31
Mobile phone	34	0.81
Tape recorder	5	0.12
Watches	15	0.36
Sewing machine	1	0.02
Fan	7	0.17
Motor cycle	1	0.02
Bicycle/rickshaw	11	0.26
Others	2	0.05

Percentage of sample households of resource ownership and decision making, by gender

Particulars	Male	Female	Jointly
<b>1) Asset ownership</b>			
Land	86	5	9
Livestock	38	7	50
Credit	45	2	7
Machinery	90	5	2
Investment	76	0	10
<b>2) Decision making for input use</b>			
Seeds	40	0	43
Fertilizers	43	0	40
Pesticides	43	0	40
Family labor	0	2	98
Hired labor	48	2	43
<b>3) Decision making for output sell</b>			
Crop main production	7	0	76
Sale quantity	2	0	81
Fodder production & use	10	0	76
<b>4) Decision making for other activities</b>			
Children marriage	0	2	83
Education of children	0	2	93
Coping mechanisms for disaster	0	5	95
Household maintenance	0	5	95
Migration	0	0	21
Pleasure trip	0	5	95
Whom to give vote	0	5	95

\*Sample households which belong to landless group and did not grow any crops were excluded.

**D) LAND RESOURCES OF THE SAMPLE HOUSEHOLDS (as on 2011)**

Area coverage per household, by types of land

Land types	Area (ha)	% of total area
High land	0.1082	16.23
Medium land	0.1868	28.02
Low land	0.2407	36.11
Very low land	0.1309	19.64

Area coverage per household, by types of soil

Soil types	Area (ha)	% of total area
Loamy	0.0508	7.63
Sandy loam	0.4065	60.99
Clay	0.0281	4.21
Clay loam	0.1811	27.17

**E) LAND USE PATTERN OF THE SAMPLE HOUSEHOLDS (As on 2011)**

Total land status, by land ownership

Per capita total land (ha)	: 0.0821
Per capita agricultural land (ha)	: 0.0585
Per capita homestead area (ha)	: 0.0066
Per capita homestead garden and bush (ha)	: 0.0170

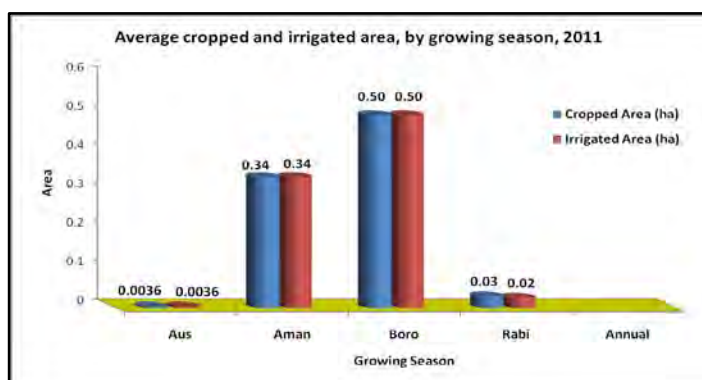
Ownership	Total land area (ha/hh)	Total irrigated area (ha/hh)
Own land	0.5793	0.5725
Leased-in on crop share	0.0574	0.0574
Leased-out on crop share	0.1341	0.1341
Mortgaged-in	0.0299	0.0299
Mortgaged-out	0.0584	0.0584
<b>Operated area</b>	<b>0.4740</b>	<b>0.4673</b>



Average area per household of major land patterns, by growing season (area in hectare)

Enterprises	Aus	Aman	Boro	Rabi	Annual
Cropped area	0.0036	0.3369	0.4971	0.0302	-
Pond/fish culture	-	-	-	-	-
Agro-forestry	-	-	-	-	-
Fallow land	0.5028	0.1277	0.0312	0.4502	-

\*Total operated area may differ from season to season due to changes in land ownership patterns.

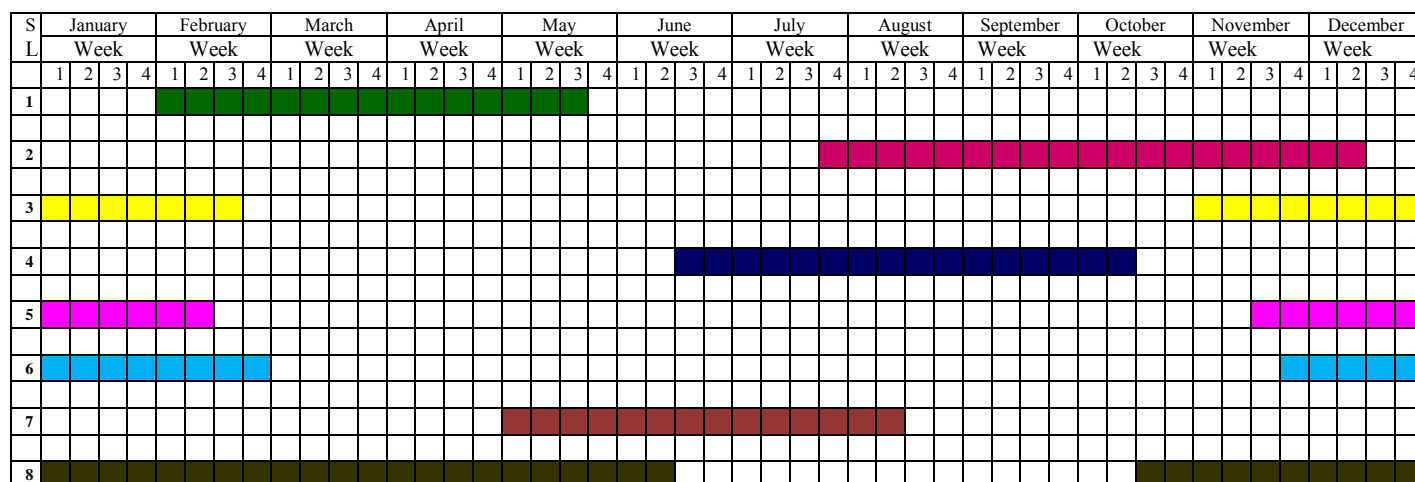


Area coverage, by sources of irrigation

Irrigation source	Area (ha/hh)	% of total area
STW	0.4605	98.56
LLP	0.0067	1.44

## F) Crop Production (As on 2011)

Seasonality of cropping calendar



Legend:

	1	Boro (Rice)		3	Potato		5	Mustard		7	Jute
	2	T. Aman (Rice)		4	Gram (Black & Green)		6	Chilli		8	Vegetables

Crops area and yield, by growing season (area in hectare)

Enterprises	Aus	Aman	Boro	Rabi	Annual
1) Cereal Crops:					
Paddy	-	0.3369 (2.65)	0.4971 (5.69)	-	-
2) Cash Crops:					
Jute	0.0014 (2.78)	-	-	-	-
3) Pulse Crops:					
Black Gram	-	-	-	0.0060 (0.37)	-
Green Gram	0.0012 (0.28)	-	-	-	-
4) Oilseed Crops:					
Mustard	-	-	-	0.0010 (1.30)	-
5) Spice Crops:					
Chilli	-	-	-	0.0072 (1.67)	-
6) Tuber Crops:					
Potato	-	-	-	0.0012 (3.00)	-
7) Vegetables:					
Tomato	-	-	-	0.0024 (8.54)	-
Bean	-	-	-	0.0005 (2.00)	-
Cucumber	-	-	-	0.0071 (7.01)	-
Vegetables	0.0010 (2.78)	-	-	0.0024 (5.75)	-
8) Mixed Crops					
	-	-	-	0.0024 (0.88)	-
<b>Gross Cropped Area</b>	<b>0.0036</b>	<b>0.3369</b>	<b>0.4971</b>	<b>0.0302</b>	<b>-</b>

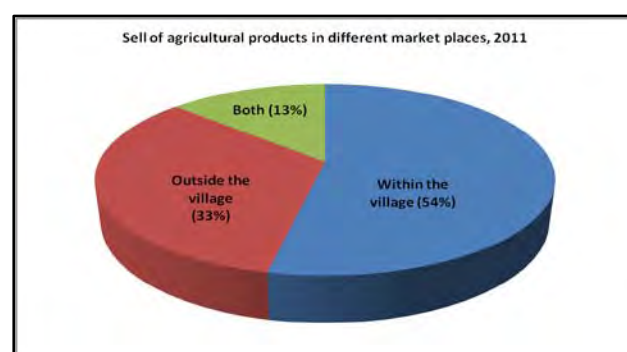
\*Figure in the parenthesis indicates yield in metric tonne per hectare.

Seasonal cropped area, by types of variety of the sample households (area in hectare)

Variety types	Rice			Non-rice			Annual
	Aus	Aman	Boro	Kharif-I	Kharif-II	Rabi	
Local	0	0.0784	0	0.0010	0	0.0132	0
Modern	0	0.2585	0.4468	0.0026	0	0.0017	0
Hybrid	0	0	0.0503	0	0	0.0153	0
<b>Total area</b>	<b>0</b>	<b>0.3369</b>	<b>0.4971</b>	<b>0.0036</b>	<b>0</b>	<b>0.0302</b>	<b>0</b>

Production, consumption and sale of all agricultural commodities

Particulars	Amount
Crop production (metric tonne/hh)	3.94
Sell (metric tonne/hh)	1.24
Sell of total production (%)	31
Consumption of total production (%)	69



Sell of agricultural products, by different market intermediaries

Market intermediaries	Percentages
Middleman/broker	80.00
Money lender	5.00
Input supplier	10.00
Neighbor	5.00



## G) BORROWING AND SAVINGS BY SAMPLE HOUSEHOLDS (as on 2011)

Membership of household members in different organizations (unit in numbers)

Name of organization	Male	Female	Both sex
Grameen bank	0	3	3
ASA	0	2	2
Other NGOs/local NGOs	1	1	2

Institutional and non-institutional sources of borrowing and saving

Sources	Numbers*	Amount (Tk/hh)	Annual interest rate (%)
<b>A) Borrowing</b>			
NGOs	7 (16.67)	1910	13.17
Public bank	15 (35.71)	8810	8.00
Friends & relatives	3 (7.14)	2452	27.50
Money lender	3 (7.14)	1857	90.00
<b>B) Saving</b>			
Bank	1 (2.38)	9524	-
Cooperatives	1 (2.38)	7143	-
NGOs	7 (16.67)	349	-

\*Figure in the parenthesis indicates percentage of total.

## H) INFRASTRUCTURE AND ACCESSIBILITY

Nearest market place (Name & distance)	:	Nagla Bazar; 2.0 km
Distance from the village market to Upazila market (km)	:	13
Distance from the village market to district market (km)	:	38
Mode of transportation	:	Rickshaw, CNG, Auto, Nosimon
Number of primary schools	:	2
Number of high schools	:	Nil
Number of colleges	:	Nil
Total number of shops in the village	:	9
Number of rice husking mills in the village	:	4
Number of public health clinic/centre	:	Nil
Number of private health clinic/centre	:	Nil
Number of religious institute in the village	:	(2) Mosque, (0) Temple, (0) Church
Number of hand tube-well for drinking water	:	70

Others business units in the village (unit in numbers)

Grocery Shop	:	9	PDS Shop	:	0	Hotel/Canteen	:	0
Meat Shop	:	0	Carpenter	:	0	Blacksmith	:	0
Medical Shop	:	0	Mason	:	2	TV/Radio Mechanic	:	0
Money Lenders	:	25	Cold Storage	:	0	Milk Dairy	:	0
Cobbler	:	0	Cycle Repair Shop	:	1	Cyber Shop	:	0

## Agricultural input shops in the village

Input	Available in village (Yes/No)	If NO, name of nearest available place	Distance from village (km)
Seed	No	Nagla bazar	2
Fertilizer	No	Nagla bazar	2
Pesticide	No	Nagla bazar	2
Machinery-purchase	No	Nagla bazar	2
Machinery-custom hiring	Yes	-	-

## Access to basic facilities of the sampled households

Facilities	Available in village	If YES, no. of house having access	Percentage of total households
Health facility	No	-	-
Drinking water facility	Yes	32	76.19
Toilet facility	Yes	39	92.90
Bathroom facility	Yes	5	11.90
Tap water connection	No	-	-
Village electrification	Yes	11	26.19
Dish connection/TV cable	No	-	-
Cooking gas facility	No	-	-

## Access to sources of information of the sample households

Sources of information	Numbers (Index)	Rank
Block supervisor/union agri. officer	7.00	2
Community bulletin board	0.15	9
Community leaders	1.91	6
Input supplier	5.58	3
National news paper	0.76	7
NGOs	3.67	5
Radio	0.16	8
Relatives, friends and neighbors	7.04	1
Television	5.53	4

## I) GOVERNMENT WELFARE PROGRAMS

### Access to social safety nets programs of the sample households

Government program	Beneficiaries*	Average amount (Tk/year/hh)
Family planning	9 (21.43)	88
Old aged pension	2 (4.76)	3150
Physically handicapped pension	1 (2.38)	3600
Widow pension	1 (2.38)	3600
Scholarships and economic assistance	15 (35.71)	827
Free health camps	9 (21.43)	118
Vulnerable group feeding (VGF)	3 (7.14)	417
Vulnerable group development (VGD)	1 (2.38)	3000

\*Figure in the parenthesis indicates percentage of total household.