

Darikamari Village at a Glance: Bogra, Bangladesh

Salient features of the VDSA Project sample village



Village Dynamics in South Asia (VDSA) Project

VDSA Project has been collecting panel data on farm households in South Asia. Based on these panel data, it provides profound insights into the social and economic changes in the village and household economies in the South Asia. The project collecting long-term socioeconomic data to better link and strengthens research, policy, and capacity building activities.

VDSA is funded by the Bill and Melinda Gates Foundation and implemented jointly by International Crops Research Institute for the Semi-Arid Tropics (ICRISAT), Indian Council for Agriculture Research (ICAR), and International Rice Research Institute (IRRI).

Humnath Bhandari, Taznoore Samina Khanam, Samarendu Mohanty, Alamgir Chowdhury, Azam Ali

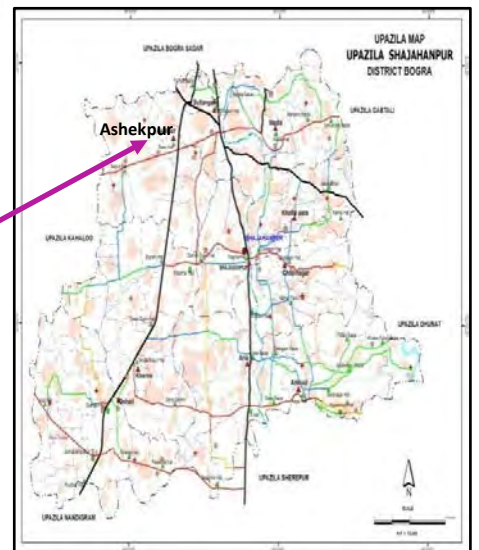
Social Sciences Division
International Rice Research Institute (IRRI)
Los Banos, Laguna 4031
Philippines

2013

Basic information about the village

A) LOCATION AND BASIC CHARACTERISTICS

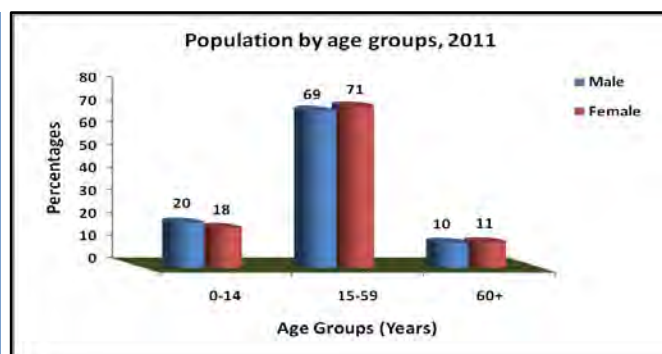
Name of the village	:	Darikamari
Name of the union	:	Ashekpur
Name of the Upazila	:	Shajahanpur
Name of the district	:	Bogra
Agro-ecological zone (AEZ)	:	Level Barind Tract (AEZ 25)
Agro-ecology	:	Favorable
Development infrastructures	:	Favorable
Distance from Upazila HQ	km	10
Distance from district HQ	km	7
Latitude (N)	:	24° 76'
Longitude (E)	:	89° 36'
Total land area (whole village)	ha	37.71
Total land area (sample households)	ha	18.26
Total households (whole village)	no.	236
Total households (sample households)	no.	41
Total population (whole village)	no.	863 (Male: 450; Female: 413)
Total population (sample households)	no.	171 (Male: 91; Female: 80)
Households involved in crop production	%	47
Distance from nearest district town	km	5
Distance from nearest national highways	km	0.5
Head of the village	:	Union Parishad Member



B) DEMOGRAPHY OF THE SAMPLE HOUSEHOLDS (as of 2011)

Classification of Population

Population density (Sq. km)	: 2289
Population growth rate (%/yr)	: 1.18
Child-women ratio (Per 1000)	: 193
Male-Female sex ratio	: 114
Income earner (Person/hh)	: 1.56
Dependency ratio (%)	: 43



Classification of Households

Male headed households (no.)	: 36
Female headed households (no.)	: 5
Total households (no.)	: 41

Household and population, by types of religion

Types of religion	Household (no.)	Population (no.)
Islam	41	171
Hindu	0	0

Distribution of households and their family size, by farm size category

Farm household category*	Number of household	Percentage share in all farms	Family size (Person/Household)
Landless	29	70.73	4.07
Small	9	21.95	4.44
Medium	3	7.32	5.67
Large	0	0	0
All farms	41	100	4.27

*Landless (<=0.2 ha), Small (0.21-1.00 ha), Medium (1.01-2.00 ha) & Large (>2.00 ha)

Educational Level

Number of literate persons and literacy rate of the population

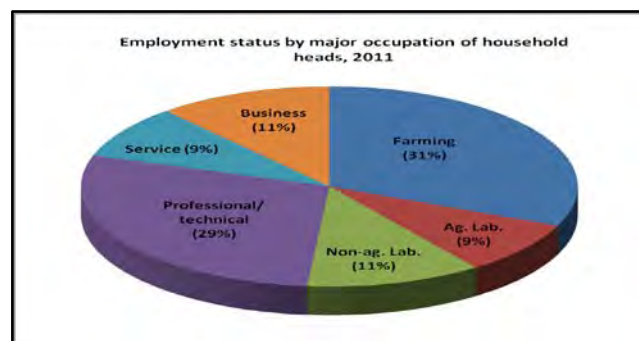
Levels of education*	Male (no.)	Female (no.)	Both sex (no.)
Illiterate	9	12	21
Can sign only	10	10	20
Primary	15	17	32
Secondary	34	28	62
Higher secondary	13	4	17
Graduate & above	2	5	7
Total literate persons	74	64	138
Literacy rate (%)	76.19	72.00	73.75

* Literacy rate was calculated for people aged 5 years and above.

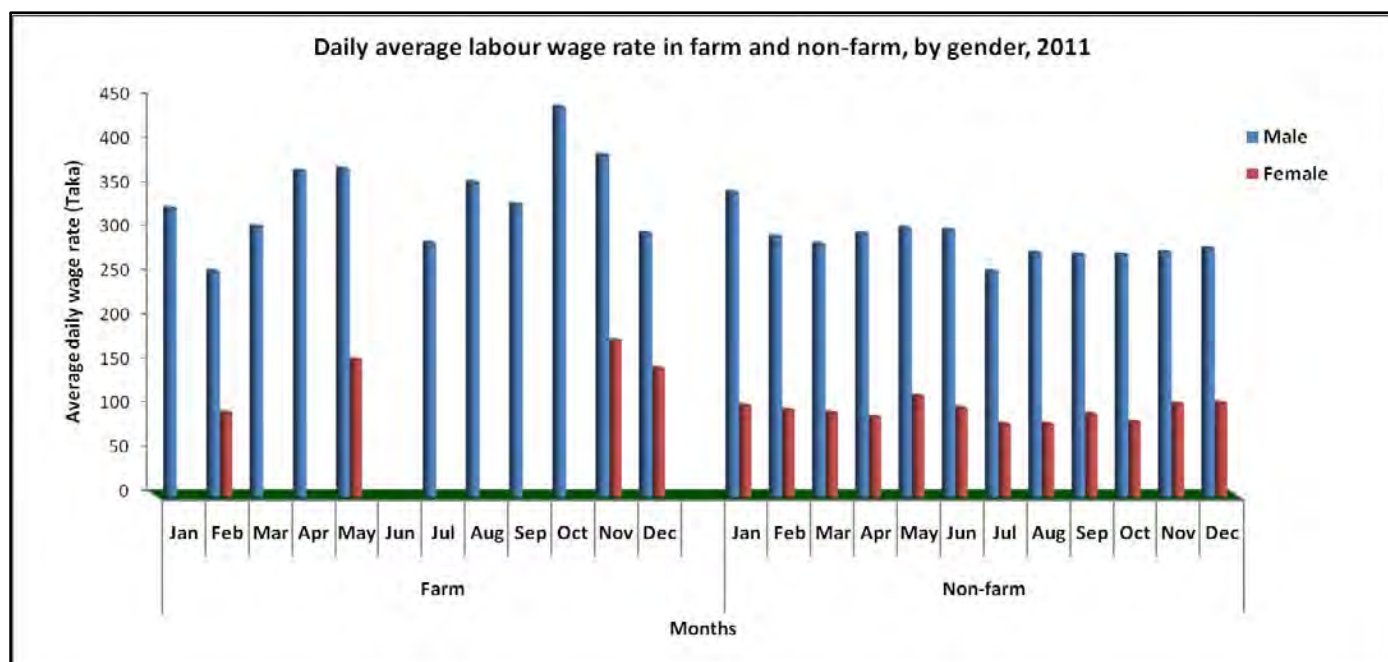
Occupation

Employment status, by major occupation

Types of occupation	Population (no.)
Farming	15
Agricultural labor	3
Non-agricultural labor	5
Professional or technical worker	22
Service worker	13
Business	6
Total economically active persons	64
Total economically inactive persons	107



Wage rates of farm and non-farm labor, by gender

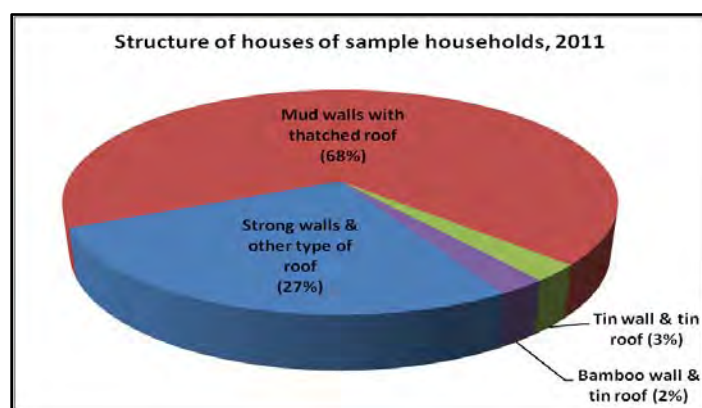


Migrated population in the sample households

Migration	Both sex (no.)	Male (no.)	Female (no.)
Within the district	3	1	2
Another district	3	3	0
Foreign country	6	5	1
Total out-migration	12	9	3
Total in-migration	14	8	6

C) OWNERSHIP OF ASSETS OF THE SAMPLE HOUSEHOLDS (as of 2011)

Structure of houses of the sample households



Possession of livestock and poultry

Types of livestock	Total numbers	Average (no./hh)
Cow	38	0.93
Young cattle/calf	50	1.22
Goat	9	0.22
Sheep	5	0.12
Poultry	262	6.39

Possession of agricultural/farm assets of the sample households

Farm machinery	Total numbers	Average (no./hh)
Local plough (iron/wooden)	7	0.17
Sprayers	8	0.20
Power tiller/tractor	4	0.10
Shallow tube well (STW)	2	0.05
Deep tube well (DTW)	10	0.24
Power pump (LLP)	1	0.02
Thresher	3	0.07
Agro processing unit	71	1.73
Other minor implements	173	4.22

Possession of consumer assets of the sample households

Types	Total numbers	Average (no./hh)
Television	26	0.63
Radio	1	0.02
Mobile phone	59	1.44
Tape recorder	5	0.12
Watches	57	1.39
Sewing machine	5	0.12
Fan	81	1.98
Motor cycle	4	0.10
Computer	2	0.05
Refrigerator	5	0.12

Percentage of sample households of resource ownership and decision making, by gender

Particulars	Male	Female	Jointly
1) Asset ownership			
Land	68	12	17
Livestock	24	5	51
Credit	29	24	41
Machinery	34	2	39
Investment	39	2	46
2) Decision making for input use			
Seeds	61	5	0
Fertilizers	61	5	0
Pesticides	61	5	0
Family labor	10	5	85
Hired labor	5	2	85
3) Decision making for output sell			
Crop main production	2	2	61
Sale quantity	2	2	61
Fodder production & use	2	5	63
4) Decision making for other activities			
Children marriage	2	2	68
Education of children	5	5	66
Coping mechanisms for disaster	10	2	78
Household maintenance	10	2	88
Migration	2	0	17
Pleasure trip	7	0	71
Whom to give vote	10	2	88

*Sample households which belong to landless group and did not grow any crops were excluded.

D) LAND RESOURCES OF THE SAMPLE HOUSEHOLDS (as on 2011)

Area coverage per household, by types of land

Land types	Area (ha)	% of total area
High land	0.0053	1.25
Medium land	0.3862	90.83
Low land	0.0337	7.92

Area coverage per household, by types of soil

Soil types	Area (ha)	% of total area
Loamy	0.4067	95.63
Sandy loam	0.0186	4.37

E) LAND USE PATTERN OF THE SAMPLE HOUSEHOLDS (As on 2011)

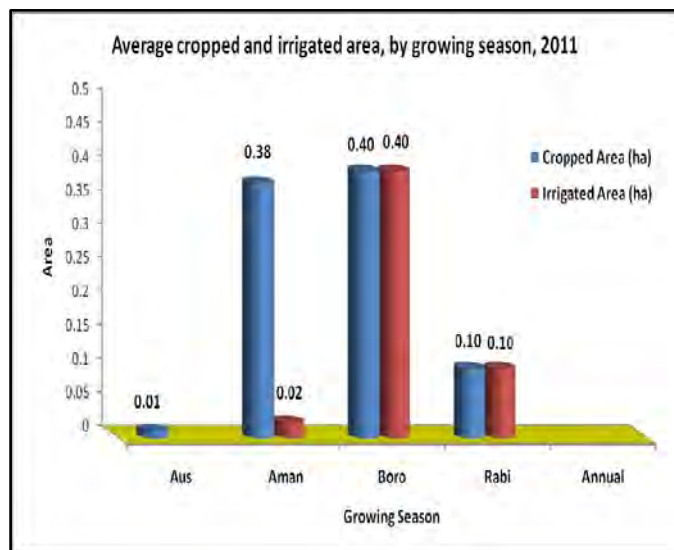
Total land status by land ownership

Per capita total land (ha)	: 0.0437	Ownership	Total land area (ha/hh)	Total irrigated area (ha/hh)
Per capita agricultural land (ha)	: 0.0277	Own land	0.2558	0.2552
Per capita homestead area (ha)	: 0.0065	Leased-in on crop share	0.0090	0.0090
Per capita homestead garden and bush (ha)	: 0.0095	Leased-in on fixed rent	0.1463	0.1463
		Leased-out on fixed rent	0.0058	0.0058
		Mortgaged-in	0.0142	0.0142
		Mortgaged-out	0.0329	0.0329
		Operated area	0.3865	0.3859

Average area per household of major land patterns, by growing season (area in hectare)

Enterprises	Aus	Aman	Boro	Rabi	Annual
Cropped area	0.0108	0.3781	0.3954	0.1034	-
Pond/fish culture	-	-	-	-	-
Agro-forestry	-	-	-	-	-
Fallow land	0.2586	0.0032	0.0080	0.2719	-

*Total operated area may differ from season to season due to changes in land ownership patterns

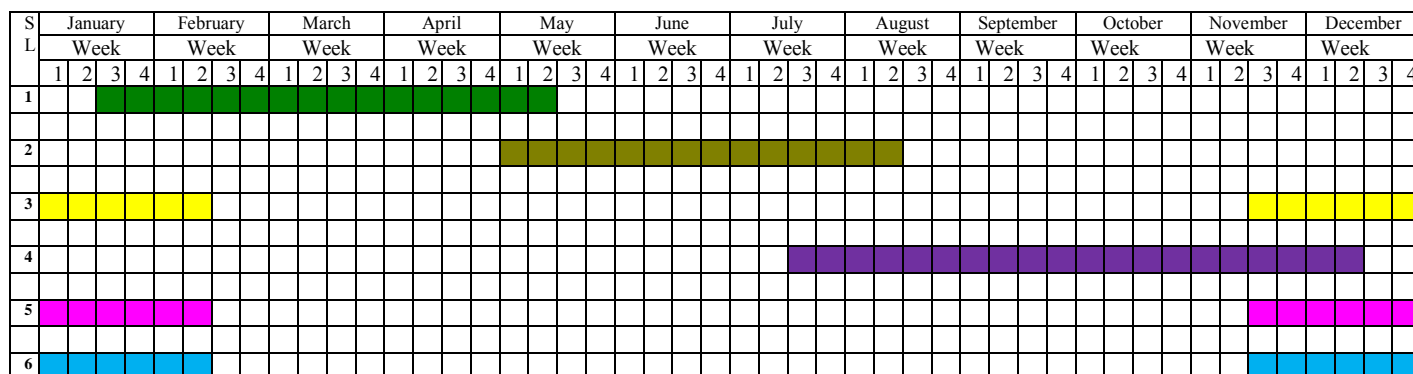


Area coverage, by sources of irrigation

Irrigation source	Area (ha/hh)	% of total area
Open dug well	0.0004	0.10
Surface irrigation systems	0.0034	0.87
STW	0.0222	5.76
DTW	0.3600	93.27

F) Crop Production (As on 2011)

Seasonality of cropping calendar



Legend:

[Green]	1	Boro (Rice)	[Yellow]	3	Potato	[Magenta]	5	Mustard
[Olive]	2	Aus (Rice)	[Purple]	4	T. Aman (Rice)	[Cyan]	6	Chili

Crops area and yield, by growing season (area in hectare)

Enterprises	Aus	Aman	Boro	Rabi	Annual
1) Cereal Crops:					
Paddy	0.0108 (2.42)	0.378 (2.21)	0.3954 (4.92)	-	-
2) Oilseed Crops:					
Mustard	-	-	-	0.0155 (0.59)	-
3) Spice Crops:					
Chilli	-	-	-	0.0004 (4.5)	-
4) Tuber Crops:					
Potato	-	-	-	0.0875 (10.51)	-
Gross Cropped Area	0.0108	0.3781	0.3954	0.1034	-

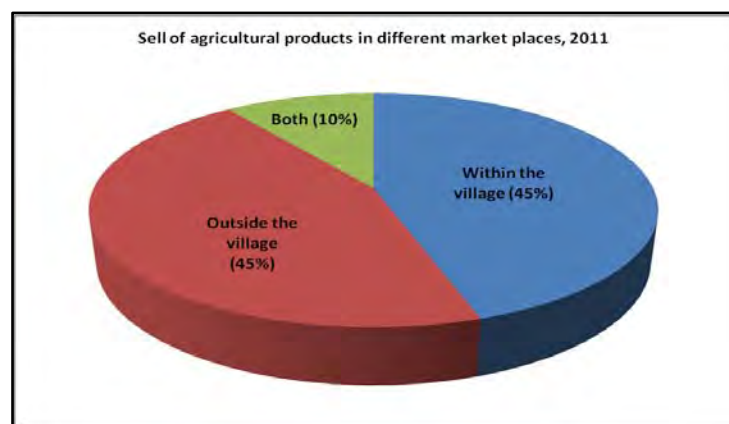
*Figure in the parenthesis indicates yield in metric tonne per hectare.

Seasonal cropped area, by types of variety of the sample households (area in hectare)

Variety types	Rice			Non-rice			Annual
	Aus	Aman	Boro	Kharif-I	Kharif-II	Rabi	
Local	0	0.0275	0	0	0	0.0004	0
Modern	0.0108	0.3506	0.3954	0	0	0.1030	0
Hybrid	0	0	0	0	0	0	0
Total area	0.0108	0.3781	0.3954	0	0	0.1034	0

Production, consumption and sale of all agricultural commodities

Particulars	Amount
Crop production (metric tonne/hh)	3.75
Sell (metric tonne/hh)	2.14
Sell of total production (%)	57
Consumption of total production (%)	43



Sell of agricultural products, by different market intermediaries

Market intermediaries	Percentages
Large trader/shop	0
Middleman/broker	100
Money lender	0
Input supplier	0
Neighbor	0

G) BORROWING AND SAVINGS BY SAMPLE HOUSEHOLDS (as on 2011)

Membership of household members in different organizations (unit in numbers)

Name of organization	Male	Female	Both sex
Grameen bank	1	14	15
ASA	1	2	3
BRAC	1	1	2
Other NGOs/local NGOs	0	2	2
Political party	2	0	2

Institutional and non-institutional sources of borrowing and saving

Sources	Numbers*	Amount (Tk/hh)	Annual interest rate (%)
A) Borrowing			
NGOs	33 (80.49)	10220	13.95
Public bank	1 (2.44)	244	8.00
Private bank	1 (2.44)	439	14.00
Friends & relatives	3 (7.32)	878	0
B) Saving			
Bank	8 (19.51)	2244	-
NGOs	21 (51.22)	5350	-

*Figure in the parenthesis indicates percentage of total.

H) INFRASTRUCTURE AND ACCESSIBILITY

Nearest market place (Name & distance)	: Ranirhat; 1.5 km
Distance from the village market to Upazila market (km)	: 8
Distance from the village market to district market (km)	: 5
Mode of transportation	: Rickshaw, Van, CNG, Motor cycle, Bicycle
Number of primary schools	: 1
Number of high schools	: Nil
Number of colleges	: Nil
Total number of shops in the village	: 14
Number of rice husking mills in the village	: Nil
Number of public health clinic/centre	: Nil
Number of private health clinic/centre	: Nil
Number of religious institute in the village	: (3) Mosque, (0) Temple, (0) Church
Number of hand tube-well for drinking water	: 180

Others business units in the village (Unit in Numbers)

Grocery Shop	: 9	PDS Shop	: 0	Hotel/Canteen	: 2
Meat Shop	: 3	Carpenter	: 0	Blacksmith	: 0
Medical Shop	: 0	Mason	: 150	TV/Radio Mechanic	: 0
Money Lenders	: 25	Cold Storage	: 0	Milk Dairy	: 0
Cobbler	: 0	Cycle Repair Shop	: 0	Cyber Shop	: 0

Agricultural input shops in the village

Input	Available in village (Yes/No)	If NO, name of nearest available place	Distance from village (km)
Seed	No	Ranirhat	1.5
Fertilizer	No	Ranirhat	1.5
Pesticide	No	Ranirhat	1.5
Machinery-purchase	No	District Sadar	5.0
Machinery-custom hiring	Yes	-	-

Access to basic facilities of the sampled households

Facilities	Available in village	If YES, no. of house having access	Percentage of total households
Health facility	No	-	-
Drinking water facility	Yes	38	92.68
Toilet facility	Yes	38	92.70
Bathroom facility	Yes	36	87.80
Tap water connection	Yes	2	4.88
Village electrification	Yes	33	80.49
Dish connection/TV cable	Yes	18	43.90
Cooking gas facility	Yes	2	4.88

Access to sources of information of the sample households

Sources of information	Numbers (Index)	Rank
Block supervisor/union agri. officer	3.64	5
Community leaders	6.16	2
Community or local news paper	1.02	9
Field days	0.07	11
Input supplier	5.45	3
National news paper	0.84	10
NGOs	1.35	8
Relatives, friends and neighbors	6.71	1
Television	4.53	4
Upazila agriculture officer	2.75	7
Village panchayat/leader (Chairman)	3.29	6

I) GOVERNMENT WELFARE PROGRAMS

Access to social safety nets programs of the sample households

Government program	Beneficiaries*	Average amount (Tk/year/hh)
Employment guarantee scheme	4 (9.76)	4500
Integrated mother & child development program	16 (39.02)	281
Family planning	22 (53.66)	300
Widow pension	1 (2.44)	1200
Scholarships and economic assistance	4 (9.76)	1088
Free health camps	13 (31.71)	219
Vulnerable group feeding (VGF)	1 (2.44)	1200

*Figure in the parenthesis indicates percentage of total household.