

Begumpur Village at a Glance: Chandpur, Bangladesh

Salient features of the VDSA Project sample village



Village Dynamics in South Asia (VDSA) Project

VDSA Project has been collecting panel data on farm households in South Asia. Based on these panel data, it provides profound insights into the social and economic changes in the village and household economies in the South Asia. The project collecting long-term socioeconomic data to better link and strengthens research, policy, and capacity building activities.

VDSA is funded by the Bill and Melinda Gates Foundation and implemented jointly by International Crops Research Institute for the Semi-Arid Tropics (ICRISAT), Indian Council for Agriculture Research (ICAR), and International Rice Research Institute (IRRI).

Humnath Bhandari, Abdur Rouf Sarkar, Samarendu Mohanty, Alamgir Chowdhury, Mizanur Rahman

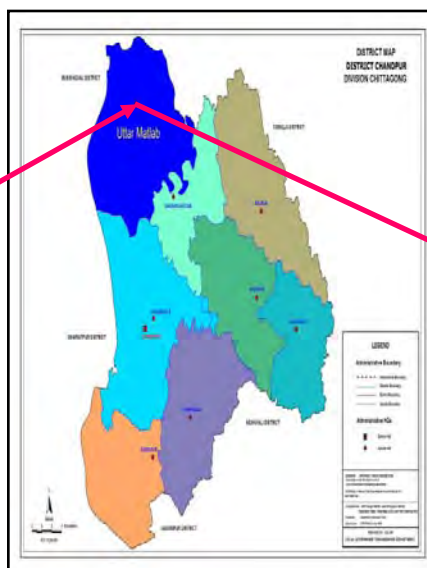
Social Sciences Division
International Rice Research
Institute (IRRI)
Los Banos, Laguna 4031
Philippines

2013

Basic information about the village

A) LOCATION AND BASIC CHARACTERISTICS

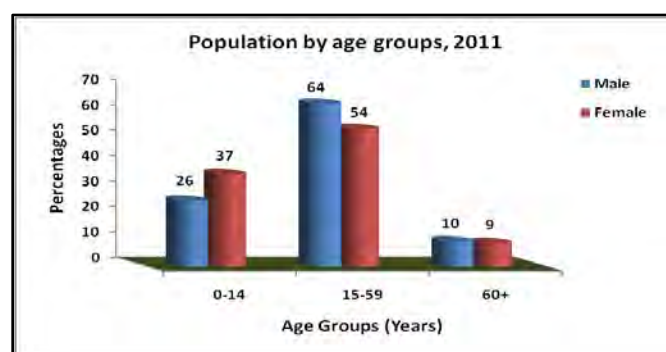
Name of the village	:	Begumpur
Name of the union	:	Purba Fatehpur
Name of the Upazila	:	Uttar Matlab
Name of the district	:	Chandpur
Agro-ecological zone (AEZ)	:	Middle Maghna River Floodplain (AEZ 16)
Agro-ecology	:	Unfavorable-flood prone
Development infrastructures	:	Favorable
Distance from Upazila HQ	km	9
Distance from district HQ	km	25
Latitude (N)	:	23° 28'
Longitude (E)	:	90° 83'
Total land area (whole village)	ha	73.55
Total land area (sample households)	ha	20.70
Total households (whole village)	no.	233
Total households (sample households)	no.	40
Total population (whole village)	no.	1246 (Male: 637; Female: 609)
Total population (sample households)	no.	249 (Male: 131; Female: 118)
Households involved in crop production	%	68
Distance from nearest district town	km	30
Distance from nearest national highways	km	25
Head of the village	:	Union Parishad Member



B) DEMOGRAPHY OF THE SAMPLE HOUSEHOLDS (as of 2011)

Classification of Population

Population density (Sq. km)	: 1694
Population growth rate (%/yr)	: -4.96
Child-women ratio (Per 1000)	: 235
Male-Female sex ratio	: 111
Income earner (Person/hh)	: 1.93
Dependency ratio (%)	: 68



Classification of Households

Male headed households (no.)	: 34
Female headed households (no.)	: 6
Total households (no.)	: 40

Household and population, by types of religion

Types of religion	Household (no.)	Population (no.)
Islam	40	249
Hindu	0	0

Distribution of households and their family size, by farm size category

Farm household category*	Number of household	Percentage share in all farms	Family size (Person/Household)
Landless	17	42.50	5.47
Small	22	55.00	6.95
Medium	1	2.50	10.00
Large	0	0	0
All farms	40	100	6.40

*Landless (<=0.2 ha), Small (0.21-1.00 ha), Medium (1.01-2.00 ha) & Large (>2.00 ha)

Educational Level

Number of literate persons and literacy rate of the population

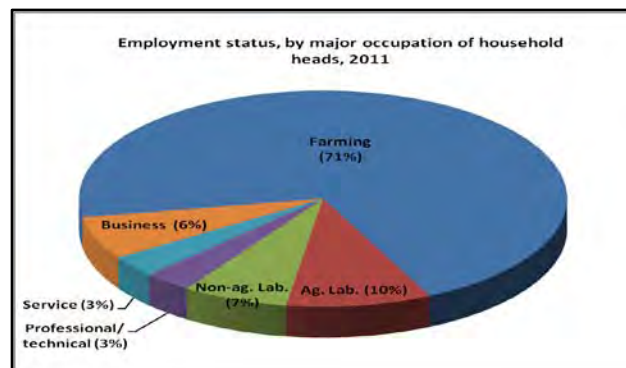
Levels of education*	Male (no.)	Female (no.)	Both sex (no.)
Illiterate	0	4	4
Can sign only	6	2	8
Primary	28	36	64
Secondary	65	53	118
Higher secondary	18	7	25
Graduate & above	6	3	9
Total literate persons	123	101	224
Literacy rate (%)	93.6	90.83	92.31

* Literacy rate was calculated for people aged 5 years and above.

Occupation

Employment status, by major occupation

Types of occupation	Population (no.)
Farming	27
Agricultural labor	3
Non-agricultural labor	4
Professional or technical worker	1
Service worker	38
Business	4
Total economically active persons	77
Total economically inactive persons	172



Wage rates of farm and non-farm labor, by gender

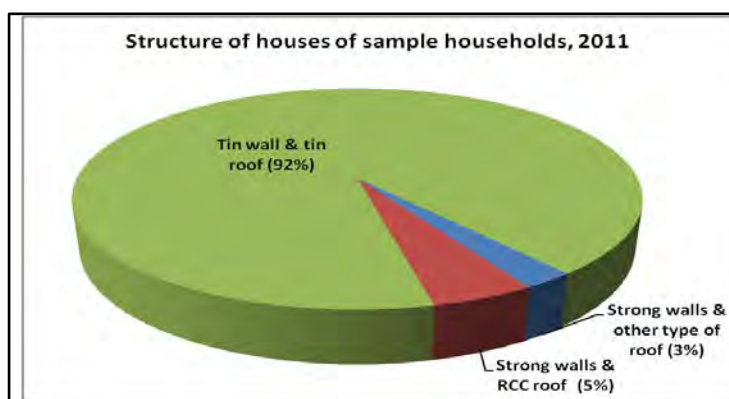


Migrated population in the sample households

Migration	Both sex (no.)	Male (no.)	Female (no.)
Within the district	3	3	0
Another district	48	34	14
Foreign country	11	11	0
Total out-migration	62	48	14
Total in-migration	0	0	0

C) OWNERSHIP OF ASSETS OF THE SAMPLE HOUSEHOLDS (as of 2011)

Structure of houses of the sample households



Possession of livestock and poultry

Types of livestock	Total numbers	Average (no./hh)
Buffaloes	4	0.10
Cow	40	1.00
Young cattle/calf	39	0.98
Goat	7	0.18
Poultry	320	8.00

Possession of agricultural/farm assets of the sample households

Farm machinery	Total numbers	Average (no./hh)
Sprayers	1	0.03
Chaff cutter	5	0.13
Weeding implements	1	0.03
Shallow tube well (STW)	2	0.05
Deep tube well (DTW)	1	0.03
Husking machine	1	0.03
Thresher	14	0.35
Agro processing unit	40	1.00
Rice/flour/grinding mills	1	0.03
Other minor implements	193	4.83

Possession of consumer assets of the sample households

Types	Total numbers	Average (no./hh)
Television	11	0.28
Radio	1	0.03
Mobile phone	52	1.30
Tape recorder	9	0.23
Watches	40	1.00
Sewing machine	2	0.05
Fan	69	1.73
Computer	1	0.03
Refrigerator	5	0.13
Bicycle/rickshaw	9	0.23

Percentage of sample households of resource ownership and decision making, by gender

Particulars	Male	Female	Jointly
1) Asset ownership			
Land	88	2	7
Livestock	50	12	32
Credit	27	10	22
Machinery	32	2	57
Investment	52	0	20
2) Decision making for input use			
Seeds	45	10	33
Fertilizers	45	10	33
Pesticides	45	10	33
Family labor	3	5	88
Hired labor	48	10	30
3) Decision making for output sell			
Crop main production	15	10	60
Sale quantity	15	10	60
Fodder production & use	5	5	80
4) Decision making for other activities			
Children marriage	3	3	85
Education of children	3	5	92
Coping mechanisms for disaster	0	5	95
Household maintenance	3	3	94
Migration	3	0	55
Pleasure trip	3	5	92
Whom to give vote	0	3	97

*Sample households which belong to landless group and did not grow any crops were excluded.

D) LAND RESOURCES OF THE SAMPLE HOUSEHOLDS (as on 2011)

Area coverage per household, by types of land

Land types	Area (ha)	% of total area
High land	0.0193	3.97
Medium land	0.3369	69.12
Low land	0.1293	26.52
Very low land	0.0019	0.39

Area coverage per household, by types of soil

Soil types	Area (ha)	% of total area
Problem soil	0.0035	0.73
Loamy	0.0034	0.71
Sandy loam	0.4440	91.08
Clay loam	0.0364	7.48

E) LAND USE PATTERN OF THE SAMPLE HOUSEHOLDS (As on 2011)

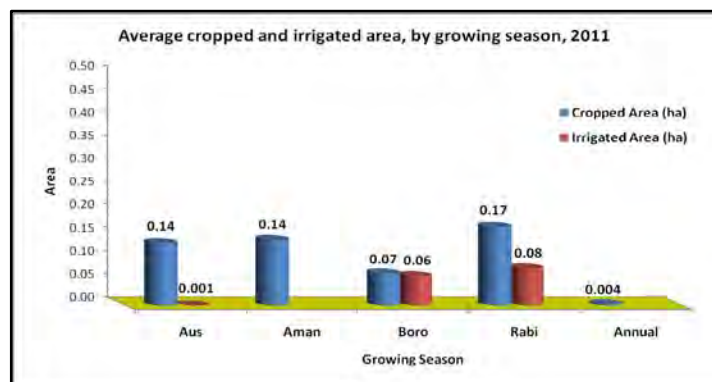
Total land status by land ownership

Per capita total land (ha)	: 0.0591	Ownership	Total land area (ha/hh)	Total irrigated area (ha/hh)
Per capita agricultural land (ha)	: 0.0484			
Per capita homestead area (ha)	: 0.0053	Own land	0.3328	0.3218
Per capita homestead garden and bush (ha)	: 0.0054	Leased-in on crop share	0.0419	0.0419
		Leased-in on fixed rent	0.0413	0.0385
		Leased-out on crop share	0.0603	0.0595
		Leased-out on fixed rent	0.0168	0.0168
		Mortgaged-in	0.0715	0.0715
		Mortgaged-out	0.0751	0.0751
		Operated area	0.3352	0.3222

Average area per household of major land patterns, by growing season (area in hectare)

Enterprises	Aus	Aman	Boro	Rabi	Annual
Cropped area	0.1361	0.1430	0.0701	0.1703	0.0036
Pond/fish culture	-	-	-	-	-
Agro-forestry	-	-	-	-	0.0038
Fallow land	0.1762	0.1621	0.1646	0.1699	0.0374

*Total operated area may differ from season to season due to changes in land ownership patterns.

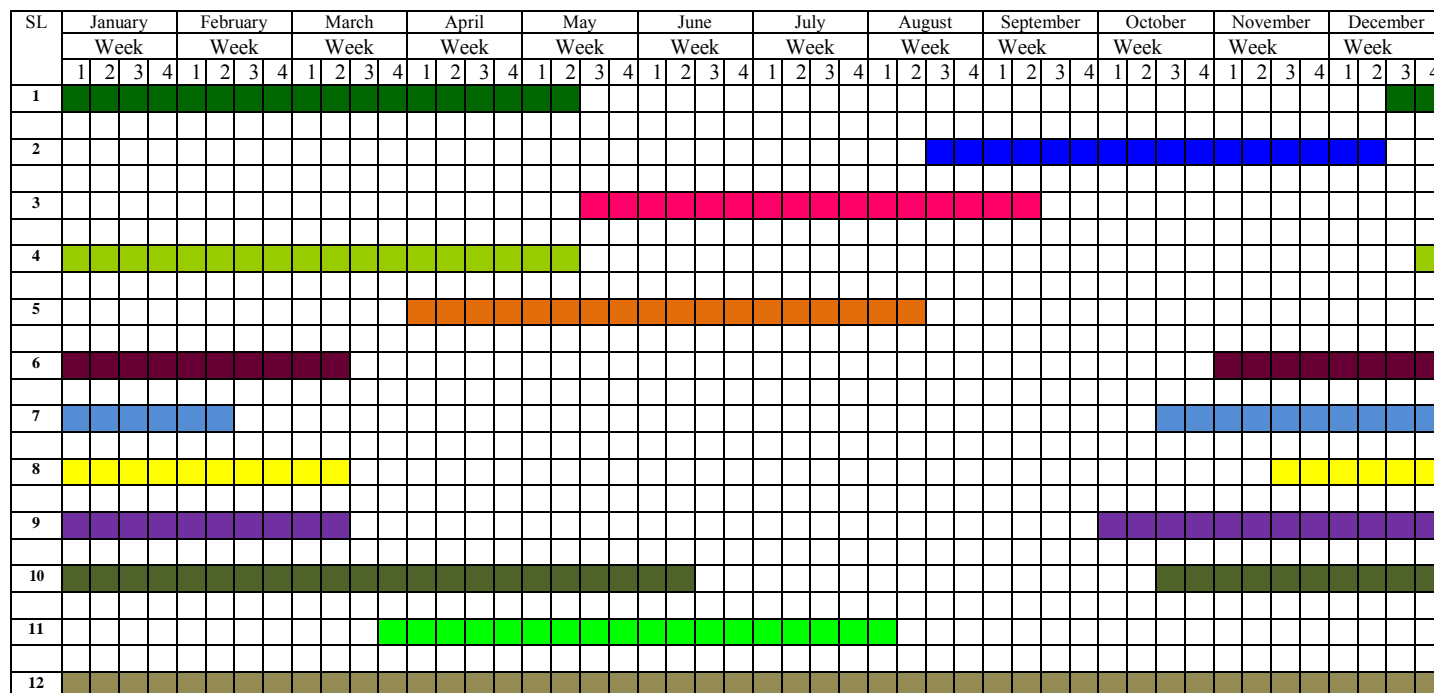


Area coverage, by sources of irrigation

Irrigation source	Area (ha/hh)	% of total area
Irrigation canal	0.0188	5.84
Local irrigation systems	0.0035	1.10
STW	0.2395	74.33
DTW	0.0010	0.31
LLP	0.0593	18.41

F) Crop Production (As on 2011)

Seasonality of cropping calendar



Legend:

1	Boro (Rice)	4	Maize	7	Mustard	10	Vegetables
2	T. Aman (Rice)	5	Jute	8	Spices	11	Dhancha
3	Aus (Rice)	6	Pulse	9	Potato	12	Sugarcane/Banana

Crops area and yield, by growing season (area in hectare)

Enterprises	Aus	Aman	Boro	Rabi	Annual
1) Cereal Crops:					
Paddy	0.1210 (2.41)	0.1430 (2.77)	0.0701 (3.40)	-	-
Maize	-	-	-	0.1038 (2.67)	-
2) Cash Crops:					
Jute	0.0120 (1.04)	-	-	-	-
Sugarcane**	-	-	-	-	0.0024 (45834)
3) Pulse Crops:					
Grass Pea	-	-	-	0.0045 (0.53)	-
Green Gram	-	-	-	0.0016 (0.06)	-
Lentil	-	-	-	0.0082 (0.61)	-
4) Oilseed Crops:					
Mustard	-	-	-	0.0437 (0.64)	-
5) Spice Crops:					
Chilli	-	-	-	0.0049 (0.82)	-
Coriander	-	-	-	0.0010 (0.40)	-
6) Tuber Crops:					
Potato	-	-	-	0.0006 (7.83)	-
7) Vegetables:					
Pumpkin**	-	-	-	0.0020 (12500)	-
Vegetables	0.0005 (1.80)	-	-	-	-
8) Fruits					
Banana**	-	-	-	-	0.0012 (44834)
9) Dhancha**	0.0026 (24231)	-	-	-	-
Gross Cropped Area	0.1361	0.1430	0.0701	0.1703	0.0036

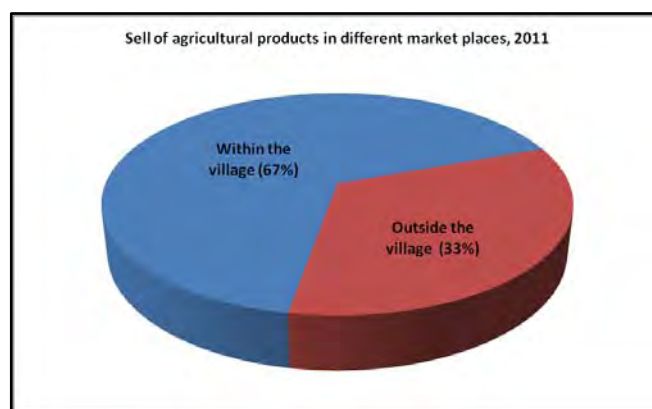
*Figure in the parenthesis indicates yield in metric tonne per hectare and ** means Taka per hectare.

Seasonal cropped area, by types of variety of the sample households (area in hectare)

Variety types	Rice			Non-rice			Annual
	Aus	Aman	Boro	Kharif-I	Kharif-II	Rabi	
Local	0.1210	0.0043	0.0024	0.0116	0	0.0665	0.0012
Modern	0	0.1387	0.0597	0.0035	0	0	0.0024
Hybrid	0	0	0.0080	0	0	0.1038	0
Total area	0.1210	0.1430	0.0701	0.0151	0	0.1703	0.0036

Production, consumption and sale of all agricultural commodities

Particulars	Amount
Crop production (metric tonne/hh)	0.98
Sell (metric tonne/hh)	0.26
Sell of total production (%)	27
Consumption of total production (%)	73



Sell of agricultural products, by different market intermediaries

Market intermediaries	Percentages
Large trader/shop	11.11
Middleman/broker	88.89
Money lender	0
Input supplier	0

G) BORROWING AND SAVINGS BY SAMPLE HOUSEHOLDS (as on 2011)

Membership of household members in different organizations (unit in numbers)

Name of organization	Male	Female	Both sex
ASA	1	1	2
BRAC	3	2	5
Other NGOs/local NGOs	0	1	1

Institutional and non-institutional sources of borrowing and saving

Sources	Numbers*	Amount (Tk/hh)	Annual interest rate (%)
A) Borrowing			
NGOs	8 (20.00)	4200	15.00
Public bank	5 (12.50)	1275	8.00
Friends & Relatives	14 (35.00)	21613	0
Moneylender	1 (2.50)	1250	120
B) Saving			
Bank	19 (47.50)	14212	-
NGOs	8 (20.00)	800	-
Post Office	1 (2.50)	12500	-

*Figure in the parenthesis indicates percentage of total.

H) INFRASTRUCTURE AND ACCESSIBILITY

Nearest market place (Name & distance)	: Sujatpur Bazar; 1.00 km
Distance from the village market to Upazila market (km)	: 8
Distance from the village market to district market (km)	: 30
Mode of transportation	: Rickshaw, CNG, Auto, Motor-cycle
Number of primary schools	: 1
Number of high schools	: Nil
Number of colleges	: Nil
Total number of shops in the village	: 1
Number of rice husking mills in the village	: 2
Number of public health clinic/centre	: Nil
Number of private health clinic/centre	: Nil
Number of religious institute in the village	: (4) Mosque, (0) Temple, (0) Church
Number of hand tube-well for drinking water	: 160

Others business units in the village (Unit in Numbers)

Grocery Shop	: 1	PDS Shop	: 0	Hotel/Canteen	: 0
Meat Shop	: 0	Carpenter	: 1	Blacksmith	: 0
Medical Shop	: 0	Mason	: 16	TV/Radio Mechanic	: 2
Money Lenders	: 0	Cold Storage	: 0	Milk Dairy	: 0
Cobbler	: 0	Cycle Repair Shop	: 0	Cyber Shop	: 0

Agricultural input shops in the village

Input	Available in village (Yes/No)	If NO, name of nearest available place	Distance from village (km)
Seed	No	Sujatpur	1
Fertilizer	No	Sujatpur	1
Pesticide	No	Sujatpur	1
Machinery-purchase	No	Uttar Matlab	8
Machinery-custom hiring	Yes	-	-

Access to basic facilities of the sampled households

Facilities	Available in village	If YES, no. of house having access	Percentage of total households
Health facility	No	-	-
Drinking water facility	Yes	29	72.50
Toilet facility	Yes	39	97.50
Bathroom facility	Yes	11	27.50
Tap water connection	Yes	3	7.50
Village electrification	Yes	32	80.00
Dish connection/TV cable	Yes	4	10.00
Cooking gas facility	No	-	-

Access to sources of information of the sample households

Sources of information	Numbers (Index)	Rank
Block supervisor/union agri. officer	0.58	8
Community leaders	4.55	4
Input supplier	5.62	2
National news paper	0.76	7
NGOs	0.85	6
Radio	0.29	9
Relatives, friends and neighbors	6.44	1
Television	5.51	3
Training & krishi melas	0.16	11
Upazila agriculture officer	0.27	10
Village panchayat/leader (Chairman)	3.71	5

I) GOVERNMENT WELFARE PROGRAMS (as on 2011)

Access to social safety net programs of the sample households

Government program	Beneficiaries*	Average amount (Tk/year/hh)
Family planning	16 (40.00)	152
Old aged pension	3 (7.50)	3600
Agriculture input subsidy/crop production program	5 (12.50)	943
Scholarships and economic assistance	11 (27.50)	923
Free health camps	14 (35.00)	166

*Figure in the parenthesis indicates percentage of total household.